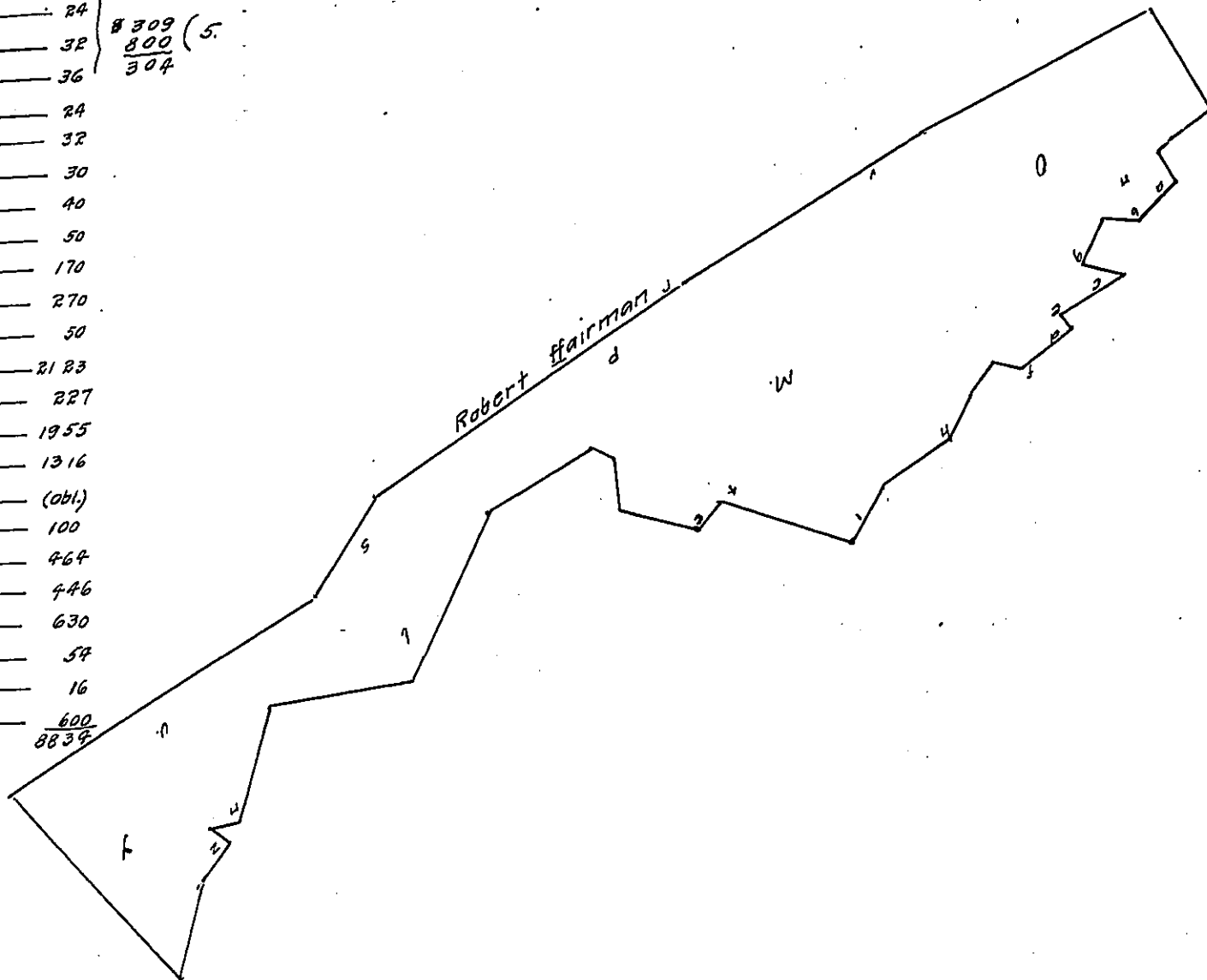


477  
406  
47  
830

12 1/2  
36  
1 1/2

- a. — 24
  - b. — 32
  - c. — 36
  - d. — 24
  - e. — 32
  - f. — 30
  - g. — 40
  - h. — 50
  - i. — 170
  - k. — 270
  - l. — 50
  - m. — 21 23
  - n. — 227
  - o. — 1955
  - p. — 1316
  - q. — (obl.)
  - r. — 100
  - s. — 464
  - t. — 446
  - u. — 630
  - v. — 54
  - z. — 16
  - y. — 600
- 8309 (5)  
800  
304
- 8839



# 36

a	b	c	d	e	f	g	h	i	k	l	m	n	o	p
24	32	36	24	32	30	40	50	170	270	50	133	227	170 1/2	188
											16 1/2		235	7 1/2
											798		370	
											133		340	
											2128		3710	
													1955	
q	r	s	t	v	w	z	y.							
140	100	464	416	630	54	18	600							
			30											
			446											

of 500<sup>a</sup> Chest<sup>e</sup>  
Smith  
Rich City  
and

5  
230  
920  
300.  
730  
113  
2190  
730  
30  
3490  
575.

IN TESTIMONY that the above is a copy of the original remaining on file in the Department of Internal Affairs of Pennsylvania, made conformably to an Act of Assembly approved the 16th day of February, 1833, I have hereunto set my Hand and caused the Seal of said Department to be affixed at Harrisburg, this fifth day of August 1909.

*Henry Horner*  
Secretary of Internal Affairs.